



Large Scale Fire & Fire Safety Building Regulation

Acquire new skills and know-how through scientific excellence

Stéphane HAMEURY



Large Scale Fire & Fire Safety Building Regulation

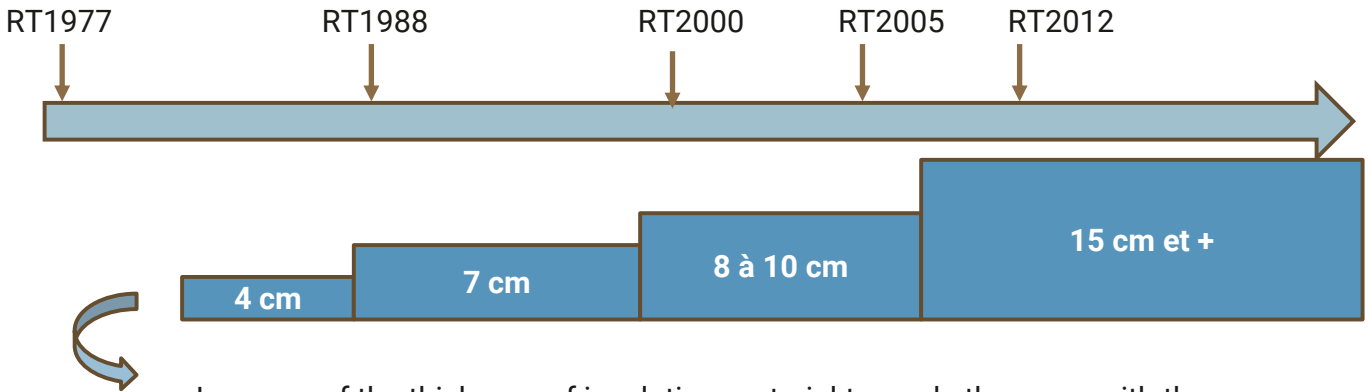
Acquire new skills and know-how through scientific excellence

Stéphane HAMEURY, Deputy Director
Business Unit Safety Structures and Fire

stephane.hameury@cstb.fr



Can we consider that low energy consumption buildings create changes in the fire development kinetics and spread?

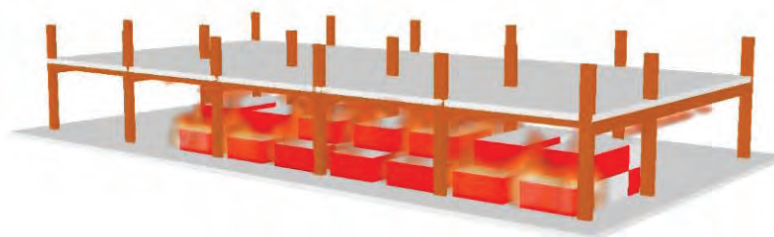
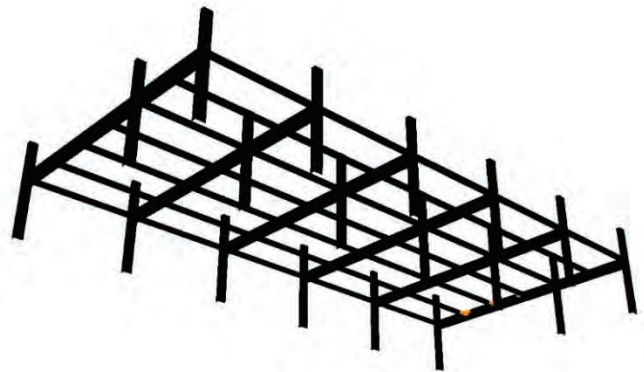


Increase of the thickness of insulating material towards the years with the change in Energy Building Regulation

Increase amount of combustible material used in building

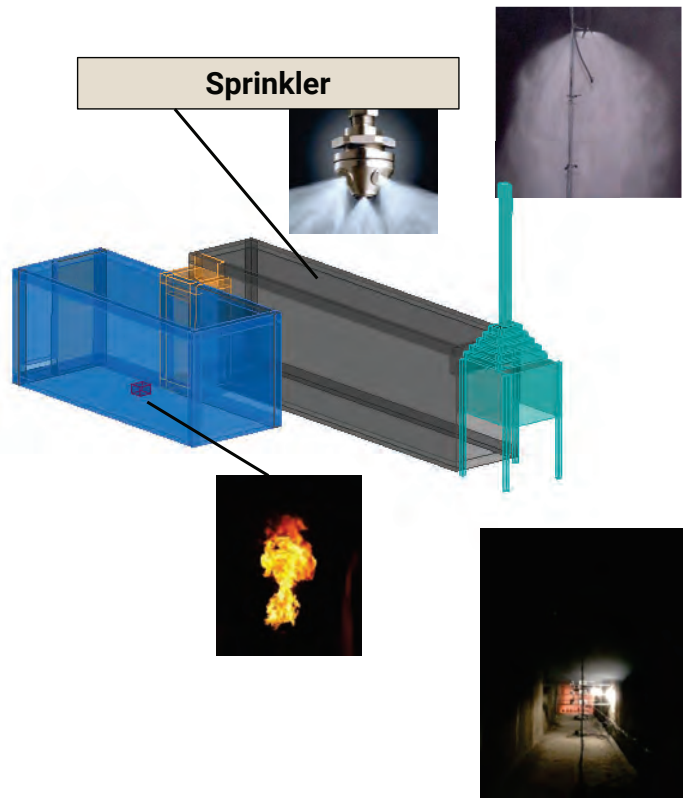
Increased requirements on the air tightness of the building envelope

Can we demonstrate the self-extinguishment capacity of wood structure as a function of the thermal action without any intervention of fire brigades?



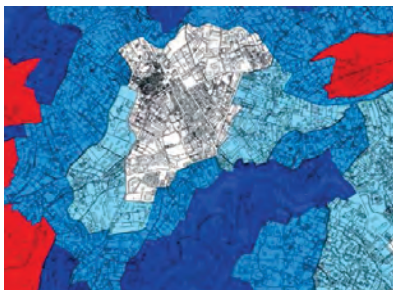
How to integrate automatic fire sprinkler systems in FSE studies?

What are the interaction between water mist system and smoke exhaust system and what shall be in consequence the operating strategy in case of fire when the two systems are simultaneously used in a building?



/ 5

Improve the understanding of how WUI fires spread and ignite structures in communities. How can we better quantify WUI fire exposures? How to translate the research results into mitigation strategies such as the development of representative standard test methods indicative of the exposures, of new materials, designs, and technologies, of scientifically proven retrofitting strategies for existing communities?



/ 6

Joint research proposal to support creativity and innovation

CSTB
le futur en construction